



# WEEKLY BULLETIN | Friday 26 March 2021

## The Week Ahead

Weekly Menu	Please <a href="#">CLICK HERE</a> to see our current Menu
Extra-Curricular Clubs	Please <a href="#">CLICK HERE</a> to see our current programme
Sports Clubs and Fixtures	Please <a href="#">CLICK HERE</a> to see our current programme
Vacancies	Please <a href="#">CLICK HERE</a> to see a list of our current Vacancies

## Key Dates

Monday 29 March—Friday 09 April 2021	Easter Holidays
Monday 12 April 2021	Staff Training Day
Tuesday 13 April 2021	All pupils back in school



# MESSAGE FROM THE PRINCIPAL

Dear Parents and Carers

As we reach the end of term, thank you for supporting your children so well during remote learning, and for your support upon the return to school as we have enacted the required Covid measures. Despite everything, a lot of activity has taken place this term; please see our magazine, [NewsCam](#) for a round-up of an extraordinary term's events.

**Covid Cases Downward Trend** If you look further into the bulletin you will see a table taken from the Local Authority weekly data report, which shows an encouraging downward trend in overall Covid positive cases across the area. We very much hope that this continues and that the summer term will see a gradual return to more normal operating procedures.

**Home Testing** Please do continue to test your children at home over the holiday, following the rigorous process carried out in school. Details of registration for this are on the next page and reminders about isolation of positive cases are given later in the bulletin: it is essential that quarantine measures are fully observed in order to continue to quell the virus. Financial support is available: Parents and carers of children who have been advised to self-isolate by their education setting or by NHS Test and Trace are now able to apply for a [Test and Trace Support Payment](#) or discretionary payment of £500, if they meet the eligibility criteria. Please also remember that you can apply for home testing kits for all members of your household - details can be found later in the bulletin.

**Staffing** We are saying farewell to a number of staff members at the end of this term; we are grateful to them for all their hard work with us and wish them very well in their future careers: Mrs Bradford and Mrs Platten are leaving the English Department and Mrs Hewitson is leaving her position of Pastoral Support Administrator with Year 10. Mrs Jacques is leaving us after working for a number of years as TA and then Teacher of Maths, and Ms Durant is leaving her position of Centre Manager after being with us almost from the opening of the school. We will miss them all. At the same time, we are happy to welcome Mrs Hodgson, Mrs Loveridge and Mrs Tomlinson back from maternity leave.

**School Uniform** As we come back in April to the summer term, we will phase out the wearing of PE hoodies in classrooms as the weather warms up. Please check that your children are in full uniform for the start of term, and please note that students' nails should be of a natural length and not visible over the fingers when viewed from the palm-side of the hand. Long acrylic nail extensions must be trimmed back before the start of term as these present multiple health and safety concerns in PE and other practical lessons.

As we look forward to the first easing of Covid restrictions, and the allowed meeting of two households or groups of up to six people in private gardens from Monday, please remind your children to continue to observe required social distancing, to give us the best possible chance of the full 'roadmap to freedom' being enacted over the summer.

Wishing you all the best possible Easter break – take good care of yourselves,

Claire Coates

# COVID-19

The figures for confirmed positive Covid 19 cases in our Local Authority Area are encouraging. Source: Coronavirus.gov.uk, updated 24 Mar at 5:08pm. Thank you to everyone for supporting the Covid safety measures which contribute to this generally hopeful picture.

## Age Profile

Week ending 19th March 2021	All ages			0-4 years olds			5-9 years olds			10-14 years olds			15-19 years olds		
	Number	Rate	Change in rate from previous week	Number	Rate	Change in rate from previous week	Number	Rate	Change in rate from previous week	Number	Rate	Change in rate from previous week	Number	Rate	Change in rate from previous week
Cambridge	35	28.0	↓	2	29.1	↑	3	42.0	↓	3	46.2	↑	1	10.8	↓
East Cambridgeshire	32	35.6	↑	2	40.7	↑	3	50.3	↑	1	17.3	↓	4	86.7	↑
Ferland	117	114.9	↑	9	157.5	↑	10	165.3	↑	5	93.4	↓	10	198.6	↓
Huntingdonshire	100	56.2	↑	4	40.0	↑	4	37.0	↑	7	69.2	↑	6	67.1	↓
South Cambridgeshire	38	23.9	↓	3	33.1	↓	2	19.1	↓	2	19.0	↑	5	57.1	→
Cambridgeshire	322	49.3	↓	20	54.7	↑	22	54.4	↑	18	47.0	→	26	71.0	↓
Peterborough	263	130.0	↑	12	77.6	↑	16	99.1	↑	16	119.8	↓	24	221.1	↑
East of England	2,706	43.4	↓	118	32.1	↑	204	51.3	↑	238	63.3	↑	201	60.4	↓
England	31,328	55.7	↓	1,102	33.4	↓	2,124	60.0	↑	2,895	86.3	↑	2,597	84.0	↓



# TestRegister

You should receive a test reminder notification from TestRegister every Sunday and Wednesday during home testing – click the link in the reminder email to register the results for your student's home test.

Please note that if you do not receive the reminder, you can still register test results on TestRegister ([TestRegister.co.uk](https://TestRegister.co.uk)).

Enter your email to receive a login link for the system. Please note that the email used must match the email you have provided to the college.

Due to the period of national lockdown that took place this term, it was necessary for the planned PSHE curriculum (and catch-up curriculum) to be altered to ensure appropriate topics for remote learning were taught in this time period. As such, the updated curriculum plan for the 2020-2021 academic year can be found [here](#)

Please note that the Relationships and Sex Education topics that were due to be taught at the start of the term have been moved back and these will begin in lessons over coming weeks.

If you have any questions please do contact your pupil's form tutor or Lucy Durrant, Head of PSHE- [ldurrant@cambournevc.org](mailto:ldurrant@cambournevc.org).

All pupils should be coming to school in their full PE kit on the days they have their PE lessons.

- If they have their PE lesson P.1-4 then they should also bring in their school uniform.
- All PE lessons will be outside on return so students should ensure they dress appropriately and bring in enough layers to keep warm. However their top layer must be a CamVC PE kit layer.
- Students can wear hats and snoods but gloves are activity dependent due to health and safety regulations.
- Footwear must be a pair of sports trainers and not the same pair they are wearing as their school uniform. Air Force 1s are not advised due to the lack of support that they give to children's developing feet muscles.
- Students will most likely still be going outside for their PE lessons even in adverse weather. Students will be permitted to wear a raincoat in this situation.



**KEEP  
CALM  
AND  
REMEMBER  
YOUR PE KIT**

**Snoods for grabs! Click here:**



**Red Nose Day** — This year it's never felt more important to have some fun and raise money to support people living incredibly tough lives. We need the power of funny to turn laughs into lasting change. We have 80 'Red Noses' for sale on a first come, first serve basis. Hurry and get yours now! **These can be purchased on ParentPay and will be delivered to you during the school day. They cost £1.50 each.** Thank you very much for your support.

# RSE Policy



As you may be aware from previous communication we are required to deliver Relationships and Sex Education and Health Education as part of our PSHE lessons. RSE and Health Education are very large topics. RSE includes learning about families, respectful relationships (including friendships), online and media, being safe and intimate and sexual relationships (including sexual health). Health Education includes mental health, internet safety, healthy lifestyles, drugs, first aid and puberty. I am very grateful for the support and suggestions that was provided by parents during the consultation for our RSE policy during September and October, this was most valuable.

There were some suggestions and comments made specific to individual circumstances although others relate more widely to the policy and lessons taught and I would like to share some responses to these for all parents to see:

- Our curriculum very carefully follows the statutory and suggested guidance on the content of what should be covered in PSHE and RSE.
- The lessons that we deliver are built on respect and teaching pupils about having respect for themselves, their peers, their families, and the wider community.
- We actively encourage trust and respect in all relationships in our lessons and we regularly suggest that pupils talk to adults at home and build trust in this relationship.
- We are aware that a number of our feeder primary schools did not cover the suggested RSE content with pupils. We are working to support catching this up with pupils in school but would appreciate and encourage your help with this by discussing body parts, personal hygiene, appropriate and inappropriate touch and staying safe online and in face-to-face situations with your pupils at home.
- A small number of topics are taught to pupils in single sex groups where it is felt that this may allow pupils the confidence to ask questions they may not ask in a mixed gender group; for example menstrual cycles. Careful consideration is taken to ensure all pupils feel comfortable with this.
- In all of our PSHE and RSE lessons we aim to be inclusive and we do this by presenting a range of views, backgrounds, values and beliefs. We highlight issues and inequalities and discuss these during our lessons, modelling and guiding inclusion with our pupils.
- Mental health is covered throughout both KS3 and KS4.
- Abuse and manipulation in relationships is taught at age-appropriate levels.
- We are aware that different religious beliefs hold different opinions regarding elements of RSE and these are incorporated into lessons and considered by staff during delivery. We teach that entering into all relationships is a choice rather than an expectation.
- Advanced warning of external visitors will be provided to parents via the bulletin. They will only be used when these are appropriate to the curriculum.

We do not use or reference any materials by the group Mermaids in our teaching.

A number of requests have been made for additional information to be provided that can be used by parents to support conversations at home. I am compiling a list of useful websites and once this is complete, I will share it with you via the bulletin and school website.

Our RSE policy is available on our website to view as well as a selection of sample RSE lessons for different year groups. If you have any questions about our RSE policy or PSHE in general, please contact Mrs Lucy Durrant- [ldurrant@cambournevc.org](mailto:ldurrant@cambournevc.org).

# Attendance

## ATTENDANCE MATTERS

6 days or less  
absence per year  
**97% or above**  
**VERY GOOD  
THIS IS YOUR  
TARGET**

Between  
7 and 19 days  
absence per year  
**90% - 96%**  
**BELOW  
EXPECTATIONS**

More  
than 19 days  
absence per year  
**Under 90%**  
**POOR  
ATTENDANCE**

## ABSENCE REQUEST

To notify us of any planned absences, please visit the [Absences](#) page on our website and submit an Absence Request Form, with 2 school days' prior notice for this to be reviewed for authorisation.

## APPOINTMENTS

We strongly encourage parents to make medical and dental appointments out of school hours where possible. Where this is not possible, pupils should be in school prior to/after the appointment and out of school for as little time as possible.

Missing registration AM or PM for a medical or dental appointment is counted as an authorised absence and advance notice is required for authorising these absences.

Please notify Reception of when an appointment is and the timings that the pupil will not be in school by emailing [thecollege@cambournevc.org](mailto:thecollege@cambournevc.org).

If we do not receive prior notification to a morning absence, we will contact home and the absence will only be authorised on proof of the medical appointment upon the pupil's return.

When leaving for an appointment, the pupil must sign out at Reception and be collected by their parent or carer, and they must sign back in when they return.

# Online Safety Tips

## KEEPING YOUR CHILD SAFE ONLINE

Your child/children may be online more than usual at the moment. Please see below some links to helpful ideas and materials around keeping children safe online:

<https://www.net-aware.org.uk/>

<https://www.thinkuknow.co.uk/>

<https://oursaferschools.co.uk/home-learning-hub/>



## Staying Safe



## Combined Minds

## COMBINED MINDS APP

Combined Minds is an app for parents and carers developed for teenage mental health charity Stem4 by Clinical Psychologists. The app aims to help families and friends support young people with their mental health.

Combined Minds use a 'strength based approach' which focuses on the positive attributes of the person and builds on resourcefulness and resilience. The app helps families to find ways to provide the right environment to help individuals they support affect their own change.

The app includes providing further information on certain needs such as anxiety and digital addiction as well as offering ways of accessing further help and useful suggestions of 'things you can do in the moment' to help support the young person.

More information can be found through the Combined Minds website at <https://combinedminds.co.uk/>

## TEAMS | ONENOTE

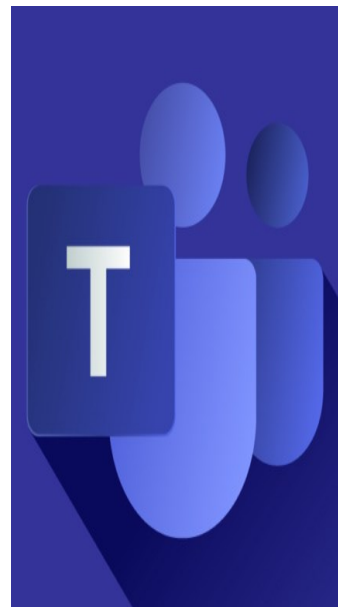
Microsoft Teams, Teams assignments, and OneNote are becoming increasingly more central to the way we are providing and receiving work. Below are some resources to help you support your children with these services.

Click here for a guide to handing in Teams Assignments:

[https://catrustorg.sharepoint.com/:b:/s/CambourneVCPublic/EckeB-WkJX1NoaAciPBjAScBG\\_cU4zuSmd0A0WEUDyO-Fw?e=OgjANx](https://catrustorg.sharepoint.com/:b:/s/CambourneVCPublic/EckeB-WkJX1NoaAciPBjAScBG_cU4zuSmd0A0WEUDyO-Fw?e=OgjANx)

[Click here](#) for a YouTube playlist with short tutorial videos

(if you prefer, your child can access the same videos through their school account [here](#))





Thank you for supporting your children's return to school by sending them back in such smart uniform. A PE Department hoodie may still be worn inside as an extra layer for any pupil who finds classrooms cool under current ventilation arrangements.

**Families who find it difficult to afford school uniform at any time should contact their Year team admin (details below), in complete confidence, so that a way forward can be found.**

Year 7 – Louise Boyd [cam-year7@cambournevc.org](mailto:cam-year7@cambournevc.org)

Year 8 – Melanie Stanford [cam-year8@cambournevc.org](mailto:cam-year8@cambournevc.org)

Year 9 – Kayleigh Blane [cam-year9@cambournevc.org](mailto:cam-year9@cambournevc.org)

Year 10 – Julia Hewitson [cam-year10@cambournevc.org](mailto:cam-year10@cambournevc.org)

Year 11 – Louise Ramsay [cam-year11@cambournevc.org](mailto:cam-year11@cambournevc.org)

Our up-to-date uniform policy and suppliers can be found on the [school website](#).

Thank you.

**FREE deliveries to the College have now been reinstated by SWI. Items delivered to the College will be available for your child to collect from their Year Team office.**

# SecondHandUniform

If you would like to check our second-hand uniform availability, please complete the form below to submit your enquiry.

[Second-Hand Uniform Request](#)

Please allow 48 hours for a response.

If your child has **lost an item of uniform**, please ask them to check with their **Year team office** in the first instance, or please **email [thecollege@cambournevc.org](mailto:thecollege@cambournevc.org)** so that we can arrange for your child to check our unnamed items.

If your child needs a coat/jacket and would like to look through our unnamed items to find something suitable for them, please ask them to go to their Year team office or email the College.





# GCSE Certificates

## Summer 2020

Now available from the School Office

You can now collect your Summer 2020 GCSE certificates from school.

You may collect them during school opening hours – please come to main reception with some ID – you will need to sign for them. A parent may collect them on your behalf – they will also need to bring ID.

Due to current Covid restrictions only one person in reception at a time. Please wear a mask and adhere to social distancing.



**Year 8 Latin Club** starts again after Easter!

Please come along to the first session on Tuesday 13<sup>th</sup> April.

If you are in year 8 and you'd like to join the club, please contact Mrs Coleridge or Mr Smyth.



# Maths Progress

## Maths Progress Assessment

If your child has been absent from their Maths progress assessment on the following days, they will be expected to complete their assessments on their first lesson back after the Easter Holidays.

Have a great Easter!

If you have any questions, please email [apickett@cambournevc.org](mailto:apickett@cambournevc.org).

Year Group	Date of progress assessment	Assessment catch up lesson
Year 7	Thursday 25 <sup>th</sup> March	Tuesday 13 <sup>th</sup> April (U, R, N, E) Wednesday 14 <sup>th</sup> April (C, A, M, B, O)
Year 8	Friday 26 <sup>th</sup> March	Tuesday 13 <sup>th</sup> April
Year 9	Friday 26 <sup>th</sup> March	Tuesday 13 <sup>th</sup> April
Year 10	Paper 1: Wednesday 24 <sup>th</sup> March Paper 2: Thursday 25 <sup>th</sup> March	Tuesday 13 <sup>th</sup> April



# Rapid Covid-19 Home Testing Kits for households with children

**Help us keep coronavirus out of school**

**Take part in twice weekly rapid Covid-19 home testing**

Households with school-age children can now test themselves twice a week from home using rapid Covid-19 home testing kits.

With up to one in three individuals with coronavirus showing no symptoms, it means some can potentially spread Covid-19 without knowing it. Regular testing of people who are unable to stay at home and don't have symptoms means that people with Covid-19 can be detected early and can self-isolate.

As children and young people return to the classroom, we need to be sure that potential Covid-19 cases are found as quickly as possible and that measures are put in place to prevent them from spreading throughout the school community. Although cases are declining generally, we all need to continue to play our part to keep the virus under control and ensure children and young people can remain in education.

Rapid Covid-19 home testing kits will be available for asymptomatic:

- adults living in households with primary and secondary-age pupils, including their childcare and support bubbles;
- school staff and adults working in the wider school community, including bus drivers and after school club leaders, as well as members of their households.

Testing is for adults only. Secondary school and college pupils will also undertake regular testing which will be provided via their school or college. Primary school pupils are not being offered rapid testing at this time but parents and carers should access a PCR Covid-19 lab test for them via the national booking system if they develop symptoms.

To find out where you can **collect** home test kits, visit:

<https://find-covid-19-rapid-test-sites.maps.test-and-trace.nhs.uk/>

If you are unable to collect, you can order online to be **delivered to your home**:

<https://www.gov.uk/order-coronavirus-rapid-lateral-flow-tests> or by calling 119.

You do not need to book an appointment or provide ID to collect your home testing kits. Each test kit contains seven lateral flow tests and instructions. You can get up to 28 tests at a time depending on the size of your household. The test usually involves taking a sample from your throat and from your nose, using a swab. You can get a result in 30 minutes.

Rapid tests don't identify all cases of Covid-19, so if your home rapid Covid-19 test is negative, it is vital you continue to follow government guidelines of social distancing, wearing face coverings and sanitising hands. If the test is positive, you should inform your child's school or college and self-isolate immediately with the rest of your household. You will be required to take a lab PCR Covid-19 test to confirm the result – you can book this at: <https://www.gov.uk/get-coronavirus-test> or call 119. If you have coronavirus symptoms get a lab PCR Covid-19 test.



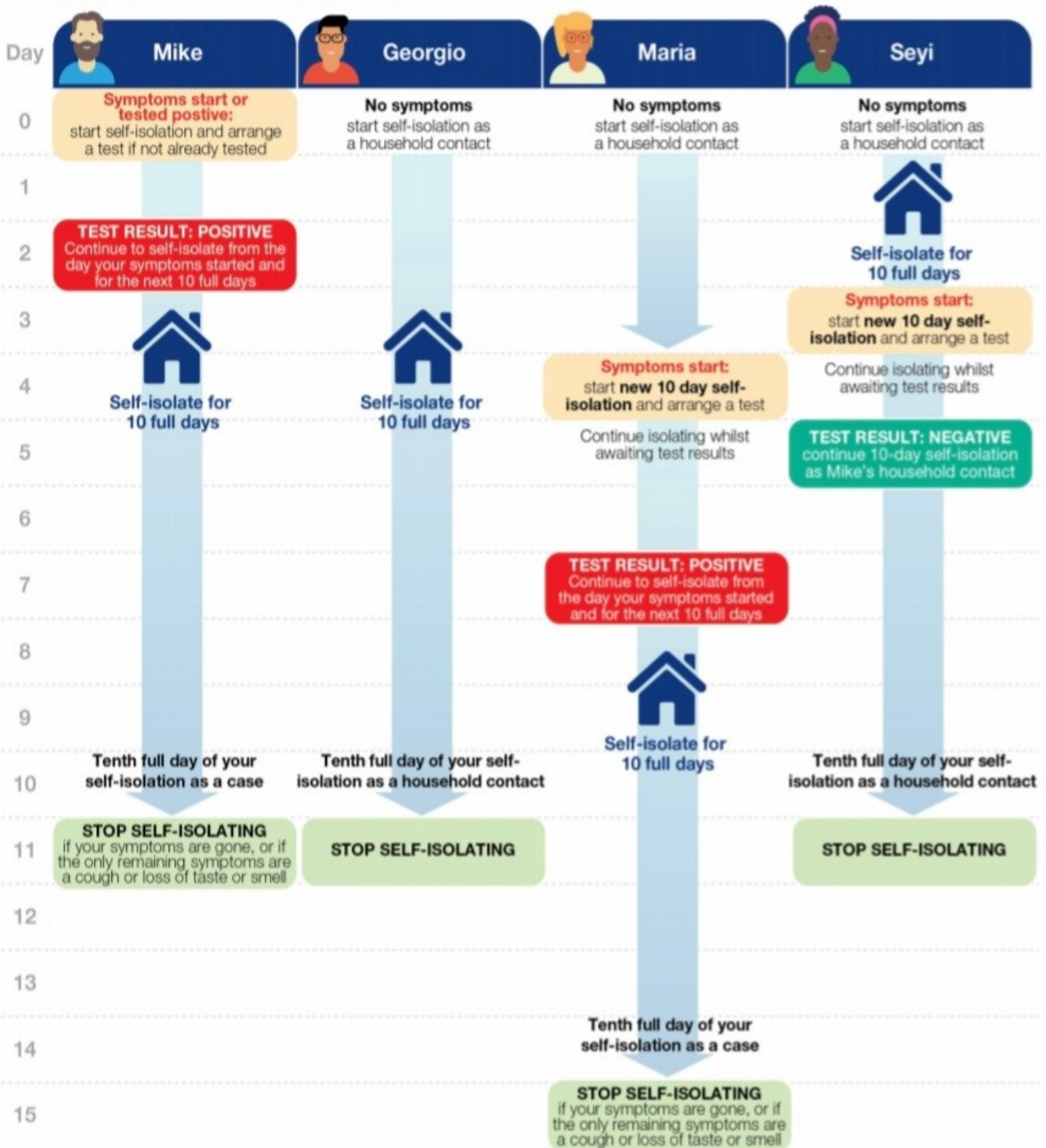
Help us **stop the spread** of coronavirus



# Stay at home and self-isolate.

Please see [detailed guidance online](#).

**Mike's household:** In this example, Mike lives with Georgio, Maria and Seyi. Mike is the first case of COVID-19 in this household. He and everyone in the household begin self-isolating from the day Mike's symptoms start (or if he had no symptoms, from the date of his positive test).



## Self-isolate for 10 full days.

You need to self-isolate from the day the first person in your household started symptoms and for the next 10 full days. If they did not have symptoms, self-isolate from the day of their test and for the next 10 full days.

## To self-isolate means:

Do not go to work, school, or public areas and do not use public transport or taxis. Only leave your home to get to your test if you need to, observe strict social distancing advice and return immediately afterwards.



HANDS



FACE



SPACE

# Opportunities

## **EasyA Tutoring: Free Maths and Physics Mentoring; open to all years**

We have been asked to share this opportunity with our school contacts, a source of online mentoring for Maths and Physics, which is free for state school students. Please see their website and get in touch with them for more information: <https://easya.io/colet-mentoring/>

## **Robinson College: BAME Student Life webinar, Saturday 20 March, 1-2pm; open to all years, but will be most relevant to Year 11 and Year 12 students**

A webinar panel of current and recently-graduated BAME (Black, Asian, and Minority Ethnic) students will discuss their experiences of student life at the University and at Robinson College. The session will explore both general student life, as well as experiences specific to students from BAME backgrounds, with discussion chaired by the current Robinson Students' Association BME Officer. A member of the Admissions Team will be present to answer any admissions queries. Sign up here: <https://cambridge.eu.qualtrics.com/jfe/form/SV>

## **Downing College: Year 9 University Taster Webinar, Wednesday 24<sup>th</sup> March 4:30 – 5:30pm; open to year 9 students and covering Cambridge student life and future options.**

Information and sign up here:

<https://www.dow.cam.ac.uk/outreach/year-9-university-taster-webinar>

Downing College invites Year 9 students across the UK to take part in a webinar to help them think about their future. Students attending the webinar will have the opportunity to find out about the University of Cambridge and explore what opportunities are available for them in the next few years. The aim of the webinar is to encourage students to think about higher education and what they can do now to support their future. A member of the admissions team and current undergraduate students will be running the webinar, and they will be happy to answer any questions students may have about Cambridge.

## **St Catherine's College and Brasenose College, Oxford: Webinar Series, Various Dates from March to July; open to year 10 and 11 students**

The webinars will cover topics such as post-16 options, Oxbridge life, and mental wellbeing.

More information and sign up here:

<https://www.caths.cam.ac.uk/outreach/year-10-and-11-webinar-series>

Kathryn Singleton and Joe Organ (Schools Liaison Officers at the two Colleges) will be delivering sessions with Oxbridge academics and students to:

- Introduce key ideas about Higher Education and making post-16 decisions
- Offer advice on how to research university and course options
- Provide information on the finances involved in attending university, addressing school students' concerns honestly and openly
- Outline life and learning at Cambridge and Oxford, breaking down some common myths
- Provide strategies for looking after mental wellbeing

Offer advice for making strong post-16 subject choices

## **Robinson College: Women in Science Festival Monday 19 April – Thursday 22 April**

**Age: Year 11 and Year 12**

Robinson College's annual Women in Science Festival will take place online for the first time this year, open to female Y11 and 12 students at UK schools. Various sessions will take place live afterschool or as pre-recorded releases each day, with content including subject taster lectures across various scientific fields, information on the application and admissions process to the University, an opportunity to hear about student life as science student. There is also a chance to develop your science communication skills by taking part in our science poster competition.

Sign up here: <https://cambridge.eu.qualtrics.com/jfe/form/SV>

# Opportunities

## **Robinson Access Programme (RAP)**

**Deadline for registration: 1 April**

**Age: Beginning in Year 11 and continuing into Year 12**

The Robinson Access Programme is designed to encourage and support students to apply to highly-selective universities. RAP is a free online programme that consists of monthly sessions for Year 11 students, intended to continue into Year 12. Sessions will introduce students to what university is, how it works, and what it's like to be a student, alongside content designed to develop independent study skills.

Sign up here: <https://cambridge.eu.qualtrics.com/jfe/form/SV>

### **What is RAP?**

RAP is an online programme for Year 11 students who are interested in learning more about university. You don't need to be certain that you'll go to university to take part, and you don't need to know which universities you want to go to. RAP will later focus in on selective universities in the UK, but the skills and knowledge will be relevant for all students and all universities.

### **How does RAP work?**

The programme will consist of monthly online sessions held over the rest of the school year, beginning in April and running until July. They will mainly be held via Zoom webinar, but there may also be pre-recorded video content and interactive sessions. You will also have the opportunity to develop your knowledge and skills through independent research or self-reflection challenges, as well as access to a Moodle forum to discuss these with other RAP participants. These sessions will introduce you to what university is, how it works, and what it's like to be a student, alongside content designed to develop your study skills.



The Cambridge Festival (26 March – 4 April 2021) is a great way of exploring the research taking place at the Cambridge universities and their departments. All of the events are free, and all are accessible online. A full list of Festival events can be found at the Cambridge Festival website: <https://www.festival.cam.ac.uk/>

### **Why take part in the Festival?**

Exploring subjects that you're interested in outside of school is a great way of working out what you might want to do or study in the future. If you're thinking about going to university, then it's also a really important way of showing universities that you're passionate about the course you're applying for. We call this 'super (or supra)-curricular' exploration, as it goes beyond what you study in school.

The Festival is a great way to try this out – either with a subject you're already interested in, something you think you might want to study in the future, or something completely new!



## Cambridge Regional College (CRC) Open Day – 15<sup>th</sup> April

For students who are still undecided or didn't receive the college/sixth form offer that they wanted, join CRC for their Open Day on 15th April to discover the variety of vocational courses and apprenticeship pathways on offer.



# APRIL OPEN DAY ONLINE PROGRAMME



We know many students have decided where they want to study after they have completed their GCSEs and have received conditional offers.



However, if you are still undecided or didn't receive the offer you wanted, join us for our Open Day on 15th April to discover the variety of vocational courses and apprenticeship pathways we offer at CRC.

### 5:30PM - WELCOME TO CRC PRESENTATION



Register for our Subject Sessions to find out about each course area, you can also request to speak to a Tutor to ask any questions you might have and decide whether it is the right choice for you. Be sure to scan the QR code to find out what time a subject session is held.

### FROM 6PM

Hear from our Senior Management Team, who will introduce you to the college, our values, show you what our campuses and facilities look like and provide an overview of our Full-Time courses and Apprenticeships. This session will be approximately 30 minutes and includes a live Q&A session where our panel will take questions from you at home.

SCAN TO REGISTER FOR 'WELCOME TO CRC' AT 5:30PM



### SUBJECT SESSIONS

- Apprenticeships
- Art & Design
- Business & Law
- Construction
- Catering & Hospitality
- Care, Health & Early Years
- Computing
- Engineering
- ESOL English & Maths
- E-Sports
- Hair & Beauty
- Motor Vehicle
- Media & Games
- Media Make-up
- Music & Performing Arts
- Sports
- Science
- Supported Learning
- Student Support Services
- Traineeships
- Travel & Tourism
- Uniformed Services

SCAN TO VIEW OUR SUBJECT SESSIONS



Our experienced Tutors will be ready to give you a call to discuss your options and give you more details about each course.

REQUEST A CALL BACK  
[WWW.CAMRE.AC.UK/SPEAK-TO-A-TUTOR](http://WWW.CAMRE.AC.UK/SPEAK-TO-A-TUTOR)

FIND OUT MORE ABOUT OUR OPEN DAYS AT  
[WWW.CAMRE.AC.UK/OPEN-DAY](http://WWW.CAMRE.AC.UK/OPEN-DAY)



# NCS this summer?

The **NCS (National Citizen Service) programme** offers young people in Year 11, a once in a lifetime opportunity to do something meaningful with their summer break, as well as a chance to develop skills, have fun and take on new challenges that will set them up for adult life. They'll also do something good for their local community, carrying out a project to support a cause they care about. Last summer, teenagers on NCS donated 200,000 hours of their time to help rebuild their communities after the first lockdown, showing what a difference young people can make when they work together towards a goal. We've seen what an amazing feeling of accomplishment and increased confidence this brings.

## **This summer it's your teen's turn!**

They can choose to participate in a 2 or a 3 week programme. During both programmes they will:

- ◇ Meet new people
- ◇ Try new things
- ◇ Give back to their local community
- ◇ Practise adult life
- ◇ Develop their skills and confidence
- ◇ Generate experience for their university application, job/apprenticeship interview or CV and more!

The difference between the 2 and 3 week programme is that on a 3 week programme the first week is a residential. Your teen will stay away from home from Monday to Friday at an activity centre. Whereas on the 2 week programme both weeks are based in the local area and your teen will attend daily.

This summer, we've got two start dates you can choose from:

- WAVE 1: Monday 05 July
- WAVE 2: Monday 02 August

**Please watch the presentation via the following link:**

<https://youtu.be/CChbFNafByc>

**Parents/carers can register their teen's interest via:**

[wearencs.com](http://wearencs.com)



# Cambridge Children's



## Cambridge Children's Hospital Competition

The Cambs Youth Panel is a group made up of young people aged from 13 to 18 who have been tirelessly supporting young people in our region through the Covid crisis with the distribution of computers and technology since March 2020.

The panel has collaborated with the team behind Cambridge Children's Network, which is made up of children, young people, families, and carers who want to help develop the new Cambridge Children's Hospital.

This will be the first EVER children's hospital in the East of England. It will offer a unique 'whole child' approach, where mental and physical health are treated together. It will also be a centre for world class research. Members of Cambridge Children's Network will combine with the project leaders to decide how the hospital looks and the care it provides before it opens in 2025.

**We are incredibly proud to support the Cambridge Children's Hospital project by offering this competition prize.**

**We are asking your students to develop a logo for Cambridge Children's Network, giving it a real sense of identity and purpose.**

**If your son or daughter succeeds in designing the logo chosen by the team, they will win a desktop gaming PC worth more than £800 (see photo).**

*This computer is equipped with an AMD Ryzen 5 motherboard and 3.6 ghz processor. It has a NVIDIA 1050 TI graphics card, 8gb of RAM, a 24-inch super flat widescreen monitor, and comes with a Huion graphics tablet, plus RGB keyboard and mouse. It really is a super prize.*

**All your son or daughter has to do is visit this link: [Click Here](#)**

*Our panel member, Molly, has prepared a YouTube video which tells them exactly what they have to do and how they can submit a competition entry for free!*

**The competition is open to any child aged 11 – 16 years old and closes on the 2<sup>nd</sup> April 2021.**

The winner will be announced shortly afterwards once the independent judging panel has decided the winning entry. Runners up prizes (Amazon vouchers) will be awarded.







Join us for a series of  
free public lectures.  
The lectures are **open  
to all** and will be hosted  
via Microsoft Teams.

## Education-All: A new free public lecture series!

Introducing our brand-new public lecture series! We hope that these free lectures help to foster a love and interest in a variety of subjects. There will be a range of speakers and the opportunity to ask questions at each lecture. This also fits in with our wider school remit of being a Village College, inspired by the ideas of Henry Morris, in which schools should act as a community hub and that education is a lifelong process. Everyone is welcome!

For this academic year, all lectures will be online and shared via Microsoft Teams. Since moving our lectures online, we have been able to invite multiple schools - attached is a map highlighting where people have been 'tuning in' from. We have had up to 270 people attend our live lectures and even more access our recordings which are freely available on the school website. Details about how to join the events (free of charge) will be available via the school website and via Twitter: @Education\_\_All

## Kick-starting our new lecture programme will be Professor James Holt on Wednesday 14th April 4-5pm

When we talk about religion and religions we have particular views of what constitutes a religion, and what a religious person looks like and believes. We will challenge what we mean by religion, and also explore the need to break out of this 'chocolate box' view of religion, where all people of a religion believe and practise the same things. We should constantly emphasise that the lived experience of religion is messy and full of diversity. There are many reasons for this, not least the attempt to systematise the beliefs and practices of groups and practices into a particular structure. This talk will suggest a way forward in understanding and recognising this diversity.

Join us via Teams: <https://bit.ly/3tzly8l>

## History Lectures

A reminder that our previous *Historic-All* History public lectures are available to view free of charge on the school website: <https://www.cambournevc.org/news-and-events/historic-all>

Thank you for all your support!

Follow us on Twitter @Education\_\_All for updates.

For more information contact:  
[jangell@cambournevc.org](mailto:jangell@cambournevc.org) &  
[lgassner@cambournevc.org](mailto:lgassner@cambournevc.org)



# FREE LECTURE PROGRAMME

We can't wait to start our lecture programme – we've got a fantastic line-up!

Further details about dates and times will be confirmed next term.

April:

**Professor James Holt**

*Associate Professor of Religious Education. University of Chester.*

**Dr Mattew Bothwell**

*Institute of Astronomy. University of Cambridge.*

**Dr Claire Kennan**

*Impact Development Manager. The University of Reading.*

May:

**Dr Markus Hellenbrand**

*Post Doctoral Research Associate. Department of Materials Science & Metallurgy, University of Cambridge.*

**Dr. Benedict Burbridge**

*Senior Lecturer in Art History. University of Sussex.*

**Dr. Eve MacDonald**

*Lecturer in Ancient History. Cardiff University.*

# FREE LECTURE PROGRAMME

Our next online lecture will be with.....

**Professor James Holt**

***The Messiness of Religion***

***University of Chester***

**Wednesday 14<sup>th</sup>**

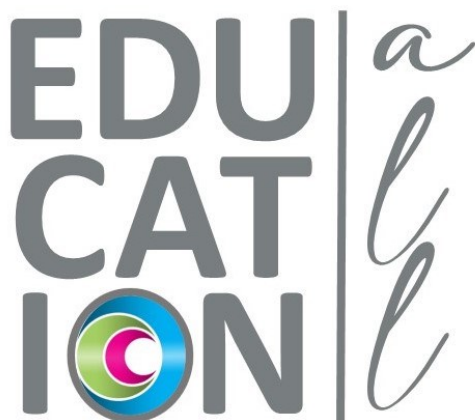
**April**

**4-5pm**

Join via Microsoft  
Teams:

<https://bit.ly/3tzly8l>

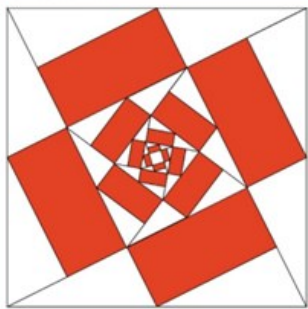
**SCAN ME**



# Maths

## What fraction of this square is shaded?

With thanks to the Mathematical Association



### Hypatia of Alexandria (360AD – 415AD)

Hypatia was the first known female mathematician.

Her most well known work was related to Diophantus's Arithmetica and simultaneous equations.

She became a martyr after her work and beliefs conflicted with many others of different beliefs. Her death marked the end of centuries of Greek progress in Maths.

It was not until after the Renaissance that another woman, Maria Agnesi, made her name as a famous mathematician.



Have you seen some maths in everyday life?

Have you seen a geometric natural phenomenon?

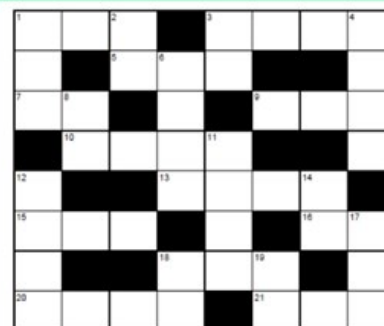
Email **Miss Pickett** with your pictures to be in with a chance to be entered into a competition!

### Mathematical Magic — Predicting Age

- 1) Choose a number between 2 and 10
- 2) Multiply the given number by 2
- 3) Add 5 to your answer
- 4) Multiply by 50
- 5) Have you celebrated your birthday yet?
  - a) If they have, add 1767
  - b) If they haven't, add 1766
- 6) Subtract the year you were born
- 7) Look at your final answer

The first digit is your original number, the last two digits is your age!

Try it on your friends and family!



Enter the answers to the sums below into the matching squares on the numbered grid

Clues Across

Clues Down

1: 191 x 2	1: 20% of 1770
3: 1327 + 2404	2: Square root of 484
5: 50% of 480	3: Three-quarters of 40
7: 6 x 7	4: 4722 - 2856
9: 424 divided by 4	6: 1872 + 2879
10: 1986 + 2971	8: 264 divided by 11
13: A quarter of 5056	11: 4035 + 3245
15: 41 x 5	12: One third of 3699
16: 75% of 76	14: 75% of 60
18: 953 - 547	17: 1453 - 741
20: 1273 + 2358	18: First prime number after 40
21: 1856 divided by 8	19: Half of 124

## Useful Websites for Additional Guidance

### Key Stage 3 and 4

Timestable Rockstar – <https://trockstars.com/>

If you are unsure about login detail, please email [apickett@cambournevc.org](mailto:apickett@cambournevc.org)

Corbett Maths - <https://corbettmaths.com/contents/>

Hegarty Maths – <https://hegartymaths.com/>

### Key Stage 4

Mathsbot - <https://mathsbot.com/gcseMenu>

Mathsbot is great for generating GCSE practice papers or GCSE questions on specific topics.

Khan Academy – <https://www.khanacademy.org/math>

Really useful videos to help with different topics (is also useful if you are considering continuing maths into A Levels)



# Library services

## After School



### Year 11 After School Revision Sessions

The School Library is resuming the after school revision sessions for Y11 pupils every Tuesday after school from 3 to 4:30.

They are welcome to do revision or homework, use a computer for research or to come just for some quiet reading. Please note that they will be expected to work independently.

**Those who would like to attend need to sign up in advance using the online signing-up form that can be found on the Y11 section on The CATalogue or via this [link](#).**

The spaces are limited, and they are allocated on a first come, first served basis, but behaviour and attitude could also be taken in consideration. Pupils will need to enter the Library using the fire door in the Y7 social area and they will need to sanitise their hands when entering and leaving. **When browsing for books, it is compulsory to wear a face mask.**



### After School Access to the School Library for pupils in Years 7, 8, 9 and 10

Starting on the week beginning 15<sup>th</sup> March, the school Library will be open after school from 3pm until 4pm for pupils in Years 7, 8, 9 and 10 on the following days:

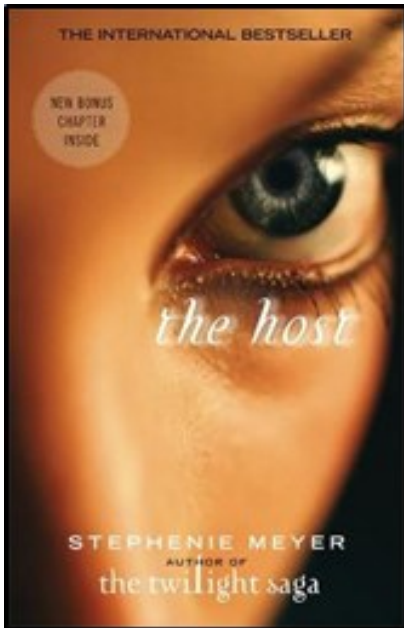
Monday	Wednesday	Thursday	Friday
8	9	7	10

Pupils are welcome to do homework, use a computer for research, look for books or to come just for some quiet reading.

They can enter the Library from the Year 7 social area using the fire door and they will need to sanitise their hands when entering and leaving.

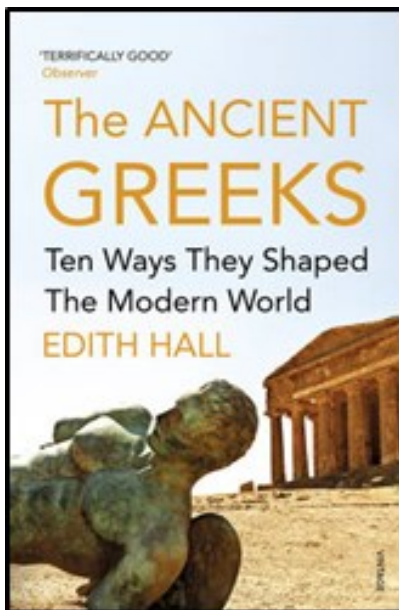
When browsing it is compulsory to wear a facemask. Depending on the number of pupils accessing it, we could limit the time they can spend inside.

# BOOK RECOMMENDATIONS



## ***The Host*** by Stephenie Meyer

Melanie Stryder refuses to fade away. The earth has been invaded by a species that takes over the minds of their human hosts while leaving their bodies intact, and most of humanity has succumbed. Wanderer, the invading 'soul' who has been given Melanie's body, knew about the challenges of living inside a human: the overwhelming emotions, the too-vivid memories. But there was one difficulty Wanderer didn't expect: the former tenant of her body refusing to relinquish possession of her mind. Melanie fills Wanderer's thoughts with visions of the man Melanie loves - Jared, a human who still lives in hiding. Unable to separate herself from her body's desires, Wanderer yearns for a man she's never met. As outside forces make Wanderer and Melanie unwilling allies, they set off to search for the man they both love. ***(Available from the School Library)***



## ***The Ancient Greeks: Ten Ways They Shaped the Modern World*** by Edith Hall

They gave us democracy, philosophy, poetry, rational science, the joke. They built the Parthenon and the Library of Alexandria. They wrote the timeless myths of Odysseus and Oedipus, and the histories of Leonidas's three hundred Spartans and Alexander the Great. But who were the ancient Greeks? And what was it that enabled them to achieve so much? Here, Edith Hall gives us a revelatory way of viewing this geographically scattered people, visiting different communities at various key moments during twenty centuries of ancient history. Identifying ten unique traits central to the widespread ancient Greeks, Hall unveils a civilization of incomparable richness and a people of astounding complexity - and explains how they made us who we are today.

***(Available from the School Library)***

# ARTICLES

Students have access to a Teams channel of articles that school staff have chosen as being particularly interesting.

If your child is looking for something to read, there is a continually-updated selection – they'll fit nicely into the reading time each day, and offer something current to learn more about.

Find it here: [Recommended Articles](#)



# USEFUL LINKS

## Extended Learning

Click on the link below to find out more about our **Extended Learning Opportunities**:

[Extended Learning Opportunities](#)



Click on the link below to access our **PE** related information:

[Parent Bulletin Links - PE](#)

## PSHE

Click on the link below to view our latest **PSHE** information:

[Parent Bulletin Links - PSHE](#)



Click on the link below to access **Covid-19** related information:

[Parent Bulletin Links - COVID-19](#)



Click on the link below to view our latest **DofE** updates:

[Parent Bulletin Links - DofE](#)

## MUSIC

Click on the link below to find information about our **Music Clubs**:

[Parent Bulletin Links - Music Clubs](#)



# Students IT Support

If your child needs a password reset, for example to their email, Show My Homework or any of the platforms we use at the College, or if they have any issues with their iPads, please email [cam-support@cambournevc.org](mailto:cam-support@cambournevc.org).

We will aim to respond to any enquiry within 24 hours.

## Communication with the School

### How can I contact my child's Year Team?



Please email [cam-year7@cambournevc.org](mailto:cam-year7@cambournevc.org) | PSA Louise Boyd

Please email [cam-year8@cambournevc.org](mailto:cam-year8@cambournevc.org) | PSA Mel Stanford



Please email [cam-year9@cambournevc.org](mailto:cam-year9@cambournevc.org) | PSA Kayleigh Blane

Please email [cam-year10@cambournevc.org](mailto:cam-year10@cambournevc.org) | PSA Julia Hewitson

Please email [cam-year11@cambournevc.org](mailto:cam-year11@cambournevc.org) | PSA Louise Ramsay

We will aim to respond to any enquiry within 48 hours.

There are a variety of ways in which we will contact you, including by telephone, by letter, by email, in our newsletters and via our website. There are several ways in which you can contact us, and these include:



By email to [thecollege@cambournevc.org](mailto:thecollege@cambournevc.org)



By calling Reception for all general enquiries on 01954 284 000



By writing to Cambourne Village College, Sheepfold Lane, Cambourne CB23 6FR



Via the 'contact us' page of our school website [www.cambournevc.org](http://www.cambournevc.org)

We will aim to respond to any enquiry within 48 hours.